



Marina Rubicón , Lanzarote 10 to 19th February, 2022

SAILING INSTRUCTIONS

49er, FX, ILCA7

The Organizing Authority is Puerto Deportivo Marina Rubicon with the support of Canary Islands Federation and Club Castillo del Águila, in conjunction with Dinghycoach.

[NP] denotes a rule that shall not be grounds for protests by a boat. This changes RRS 60.1(a).[DP] denotes a rule for which the penalty is at the discretion of the International Jury.

[SP] denotes a rule for which a standard penalty may be applied by the race committee without a hearing or a discretionary penalty applied by the International Jury with a hearing

1. RULES

1.1 The regatta will be governed by the rules as defined in *The Racing Rules of Sailing*. RRS Appendix P, *Special Procedures for Rule 42*, will apply

1.2 For the Medal Race, World Sailing Addendum Q, takes precedence over any conflicting instructions.

1.3 No National Authority prescriptions will apply.

1.4 [DP] Penalties for breaches of RRS 41, the Class Rules or the Equipment Inspection Regulations are at the discretion of the International Jury.

1.5 If there is a conflict between languages, the English text will take precedence.

1.6 If there is a conflict between Notice of Races and Sailing instructions, Sailing Instructions take precedence. This change RRS 63.7



2. IDENTIFICATION [DP][NP][SP]

2.1 Boats may be required to display the stickers provided by the Organising Authority on both sides of the forward 25% of the hull, 200mm from the bow. Boats shall affix the stickers in accordance with any instructions given by the Organising Authority.

2.2 [SP] Provided one race has been completed, from 17th February onwards, each day while racing, the sailors of the first, second and third boats in series ranking at the beginning of the day shall wear yellow, blue and red lycra bibs respectively. These bibs will be available at the Race Office each day from two hours before the first scheduled warning signal of the day and shall be returned by competitors as soon as possible after the day's racing.

3. CAMERAS AND ELECTRONIC EQUIPMENT [NP]

3.1 [DP][SP][NP] The Organising Authority may supply GPS tracking units. Boats shall carry these GPS units whilst racing. The GPS units shall be picked up every morning from the Race Office before going afloat and shall be returned to the Race Office no later than the end of protest time.

3.2 No competitor or support team shall use a drone over the racing area.

3.3 Competitors may be required to carry on-board cameras provided by the organization Media Team. These cameras will be installed by the Media Team each day from two hours before the first scheduled warning signal of the day and shall be removed by the Media Team as soon as possible after the day's racing.

The sailors designated to carry the on-board cameras will be published no later than 2 hrs. before the 1st warning signal of the day.

4. NOTICES TO COMPETITORS

4.1 Notices to competitors will be posted online on the event website:
<https://www.lanzarotesailingcenter.com>

5. CHANGES TO SAILING INSTRUCTIONS.

5.1 Any change to the sailing instructions will be posted not less than two hours before the scheduled warning signal on the day it will take effect, except that any change to the timing of races, will be posted by 2000 the day before it will take effect.

6. SIGNALS MADE ASHORE

6.1 Signals made ashore will be displayed at the official flagpoles. For ILCA7 at the Marina Wall, next to the ramp. For 49er & FX, there will be a flag pole by the sailing school ramp.

6.2 [DP][NP][SP] Class Flag displayed ashore with one sound signal means: "the warning signal will be made not less than 45 minutes after Class Flag is displayed and never before the scheduled time. Boats shall not leave their allocated berth until this signal is made".

7. SCHEDULE OF EVENTS

7.1

10 Feb	0930 - 1700	Registration all classes
11 Feb	0930 - 1700 17.30	Registration all classes Sailors/Coaches Briefing
12 to 15 Feb	1100	First Warning Signal IQ foil M & W
15 Feb	After Racing	Prize Giving
16 to 19 Feb	1100	First Warning Signal 49er, FX, ILCA7
19 Feb	After Racing	Prize Giving

7.2 See attachment C for Racing Schedule and area assignments.

7.3 On 19 Feb there will be no warning signal for fleet races after 16.00hrs. No warning signal for medal race after 17.00hrs

8. FORMAT OF RACING - OPENING SERIES AND MEDAL RACE

8.1 The regatta will consist of an Opening Series and a Medal Race.

8.2 The Opening Series will be a single fleet series.

8.3 The Opening Series will consist of a a maximum of 16 races for 49er & FX and a maximum 12 races for ILCA 7

8.4 Top 10 teams from the Opening Series will take part in the Medal Race.

9. CLASS FLAGS

9.1 Class flag will be the respective class insignia.

10. RACING AREAS

10.1 Attachment B shows the location of the race areas.

10.2 Attachment C shows the racing schedule including the time of the first warning signal and assignment of fleets to racing areas. Any change to racing areas will be posted 15 minutes before Class flag is displayed ashore, see SI 6.2.

10.3 [DP][NP] Boats not racing shall not sail in a course being used by another fleet or interfere with any boat racing.

11. THE COURSES

11.1 Attachment A shows the course to be sailed, the order in which the marks are to be



1



passed, the side on which each mark is to be left, and the signals indicating the number of rounds to be sailed.

11.2 No later than the warning signal, the race committee signal vessel will display the approximate compass bearing from the race committee signal vessel to mark 1.

11.3 There will be a gate at the leeward mark. The gate may be replaced by a single mark to be left to port.

12. MARKS

ILCA Course

Course Marks Yellow

Change mark..... Green

49er & FX Course

Course Marks Red

Change mark..... Yellow

All Courses

Starting marks..... RC vessels

Finishing marks RC vessel and RC
vessel or a pin with blue flag

13. START

13.1 The starting line will be determined by the position of the Orange Flags on the RC vessels.

13.2 [DP][NP] Boats whose warning signal has not been made shall avoid the starting area.

13.3 A boat starting later than four minutes after her starting signal will be scored Did Not Start. This changes RRS A4 and A5.

13.4 To alert boats that a race or sequence of races will begin soon, the orange starting line flag will be displayed with one sound signal not less than two minutes before a warning signal is displayed.

14. CHANGE OF THE NEXT LEG OF THE COURSE

14.1 To change the next leg of the course, the race committee will lay a new mark and remove the original mark as soon as practicable.

15. THE FINISH

15.1 The finishing line will be between a staff displaying a blue flag on the port end and either a staff displaying a blue flag or the finishing mark on the starboard end.

16. TIME LIMITS



1



16.1 For the Opening Series the time limits and target times are:

49er & FX:

Time limit..... 45 minutes

Target time..... 30 minutes

Finish window..... 10 minutes

ILCA6 & ILCA7:

Time limit..... 75 minutes

Target time..... 50 minutes

Finish window..... 10 minutes

16.2 For the Medal Races the time limits and target times are as follows:

Time limit..... 30 minutes

Target Time..... 12 minutes

Finish Window..... 4 minutes

16.3 The Finishing Window is the time for boats to finish after the first boat starts, sails the course and finishes. Boats failing to finish within the Finish Window will be scored Did Not Finish without a hearing. This changes RRS 35, A5.1 and A5.2.

17. PENALTY SYSTEM

17.1 Appendix P, Special Procedures for Rule 42 will apply. RRS 44.1 and RSS P2.1 are changed so that the Two-Turns penalty is replaced by the One-Turn penalty for the 49ers and 49ers Fx classes.

17.2 Penalties for breaches to the Notice of Race and Sailing Instructions marked [DP], are at the discretion of the International Jury.

17.3 Breaches of rules in the SIs marked [NP] will not be grounds for a protest by a boat. This changes RRS 60.1(a).

17.4 For breaches of the SIs marked [SP], the race committee may apply a standard penalty without a hearing. A list of these breaches and the associated standard penalties will be posted on the Official Notice Board. However, the race committee may protest a boat when they consider the standard penalty to be inappropriate. A boat that has been penalized with a standard penalty can neither be protested for the same incident by another boat nor can another boat request redress for this race committee action. This changes RRS 60.1, 63.1 and Appendix A5.

18. PROTEST TIME & HEARING REQUESTS

18.1 The protest time limit is 60 minutes after the last boat finishes the last race of the day or the race committee signals no more racing today, whichever is later. The time will be posted on

the

official notice board.

18.2 Hearing request forms are available on the website:
<https://www.racingrulesofsailing.org/events/3338>

18.3 Notices will be posted no later than 30 minutes after the protest time limit to inform competitors of hearings in which they are parties or named as witnesses. Hearings will be held in the Tent.

18.4 A list of boats that have been penalized for breaking RRS 42 under Appendix P will be posted.

18.5 For the purposes of RRS 64.4(b) the 'authority responsible' is the Technical Committee appointed by the Organising Authority.

18.6 RRS 66.2 (a) will apply on the last scheduled day of racing of each series.
The time limit for requests under RRS N1.4(b) is 5 minutes after a party is informed of a decision.

19. INTERNATIONAL JURY

19.1 Decisions of the International Jury will be final as provided in RRS 70.5

20. SCORING

20.1 The low point scoring system of Appendix A, as changed below, will apply.

20.2 Three races are required to be completed to constitute an event.

20.4 When less than four races have been completed, a boat's overall score shall be the sum of her race scores.

20.5 When four or more races have been completed, a boat's overall score shall be the total of her race scores excluding her worst score.

20.6 ILCA6 & ILCA7: when 10 or more races have been completed, a boat's overall score shall be the total of her race scores excluding her two worst scores.

49er & FX: when 12 or more races have been completed, a boat's overall score shall be the total of her race scores excluding her two worst scores.

20.7 The points for each boat carried forward into the Medal Race will be the score from the Opening series.

20.8 The boats competing in the Medal Race will be placed 1st to 10th based on their total scores, Opening Series + Medal Race. The remaining boats will then be placed based on their Opening Series score.

21. MEDAL RACE

21.1 The medal race will be for the top 10 boats overall in the Opening Series.

21.2 The medal race score shall not be excluded.

21.3 The medal race points are doubled.

22. SERIES TIES



1



- 22.1 In the Opening Series, ties will be broken in accordance with RRS A8
22.2 In the medal race, ties will be broken by the medal race score.

22. SCORING ENQUIRIES

22.1 To request correction of an alleged error in posted race or series results, a boat shall submit a completed scoring enquiry form, available on the event website.

23. [DP][SP] SAFETY

- 23.1 Appropriate floating device shall be worn at all times while afloat, except briefly while changing or adjusting personal equipment.
23.2 [SP] There will be check out & check in at the desk next to the ramp.
23.3 Boats not leaving the shore or abandoning a race shall notify the RC or the Race Office as soon as reasonably possible.
23.4 The RC radio Channels will be:
Area A 69
Area B 72

24. REPLACEMENT OF CREW OR EQUIPMENT

- 24.1 Replacement of helm or crew requires written approval of the PRO. Requests shall be made online at the first reasonable opportunity. The request form may be found on event web site.
24.2 Replacement of equipment requires written approval of the Technical Committee. Requests for replacement of equipment shall be made online at the first reasonable opportunity. The request form may be found on the event web site.

25. EQUIPMENT AND MEASUREMENT CHECKS

- 25.1 Some boats may be inspected for class rules compliance prior to racing. All boats shall comply with Equipment Regulations.
25.2 In addition, any boat or equipment may be checked for compliance with the class rules and sailing instructions at any time.
25.3 Limitations of equipment
Only one sail/set of sails and spars, one hull, one set of foils, shall be used during the regatta.
For 49er and 49erFX only - Only one spinnaker pole and one forestay shall be used during the regatta.
25.4 All boats, when not afloat, shall be placed in their assigned spots.

26. OFFICIAL BOATS

Official boats will be identified as follows:



1





Race committee boats ILCA Course: White flags with RC
49er & FX Course: Pink flags with RC

Jury boats..... White flags with IJ
Technical Committee boats..... White flags with M
Media boats..... White flags with PRESS



1



27. SUPPORT BOATS [DP][NP]

27.1 Team leaders, coaches and other support personnel shall not be in the area where boats are racing or within 100 metres of any boat racing from the time of the preparatory signal until all boats have finished or the race committee signals a postponement, general recall or abandonment. This SI does not apply during rescue operations.

27.2 At all times while on water, support boats shall display their national letters on the outside of the hull or on the side of the outboard motor cover.

27.3 Support boats shall comply with the Class Support Boat Regulations.

27.4 Support boats that are motoring at more than 5 knots shall remain at least 150meters from any boat that is racing.

27.5 All support boats are at all times submitted to the Organising Committee and Race Committee authority and must comply with any instructions given by these authorities.

27.6 Support vessels shall always be on the outside of the media boats (away from the fleet side) so that the media boats can capture images without coach boats in the image. This does not apply during any safety incident.

27.7 Organizing Authority may supply stickers for support boats. In this case it's mandatory to put the stickers as much visible as possible when afloat.

28. CODE OF CONDUCT [DP][NP]

Competitors shall comply with any reasonable request from a regatta official or a member of the Organising Authority.

29. TRASH DISPOSAL [DP][NP]

As sailors, we seek to protect and restore our oceans and coastal waters. Trash maybe placed aboard support and race committee boats.

30. RADIO COMMUNICATION [DP][NP]

A boat shall neither make radio transmissions while racing nor receive radio communications not available to all boats. This restriction also applies to mobiletelephones.

31. PRIZES

Prizes for the Event will be announced and awarded to the first, second and third classified overall in each class. Other prizes may be awarded at the discretion of the Organising Authority

32. RISK STATEMENT

32.1 RRS 3 of the Racing Rules of Sailing states: "The responsibility for a boat's decision to participate in a race or to continue racing is hers alone."

32.2 Sailing is by its nature an unpredictable sport and therefore inherently involves an element of risk. By taking part in the event, each competitor agrees and acknowledges that:

- a. They are aware of the inherent element of risk involved in the sport and accept responsibility for the exposure of themselves, their crew and their boat to such inherent risk whilst taking part in the event;
- b. They are responsible for the safety of themselves, their crew, their boat and their other property whether afloat or ashore;
- c. They accept responsibility for any injury, damage or loss to the extent caused by their own actions or omission;
- d. Their boat is in good order, equipped to sail in the event and they are fit to participate;
- e. The provision of a race management team, patrol boats and other officials and volunteers by the event organizer does not relieve them of their own responsibilities; The provision of patrol boat cover is limited to such assistance, particularly in extreme weather conditions, as can be practically provided in the circumstances.
- f. It is their responsibility to familiarize themselves with any risks specific to this venue or this event drawn to their attention in any rules and information produced for this event and to attend any competitors' briefing held for this event.

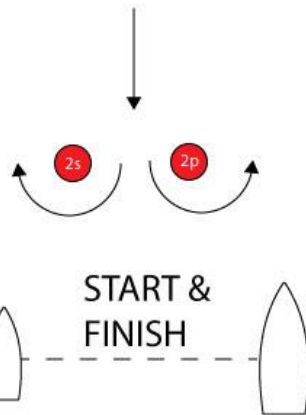
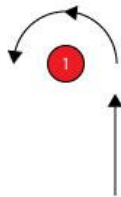
33. INSURANCE [DP][NP]

Each participating boat shall have valid third-party liability insurance with a minimum cover of at least EUR 1.000.000 (or equivalent) per incident.

ATTACHMENT A - COURSE DIAGRAM

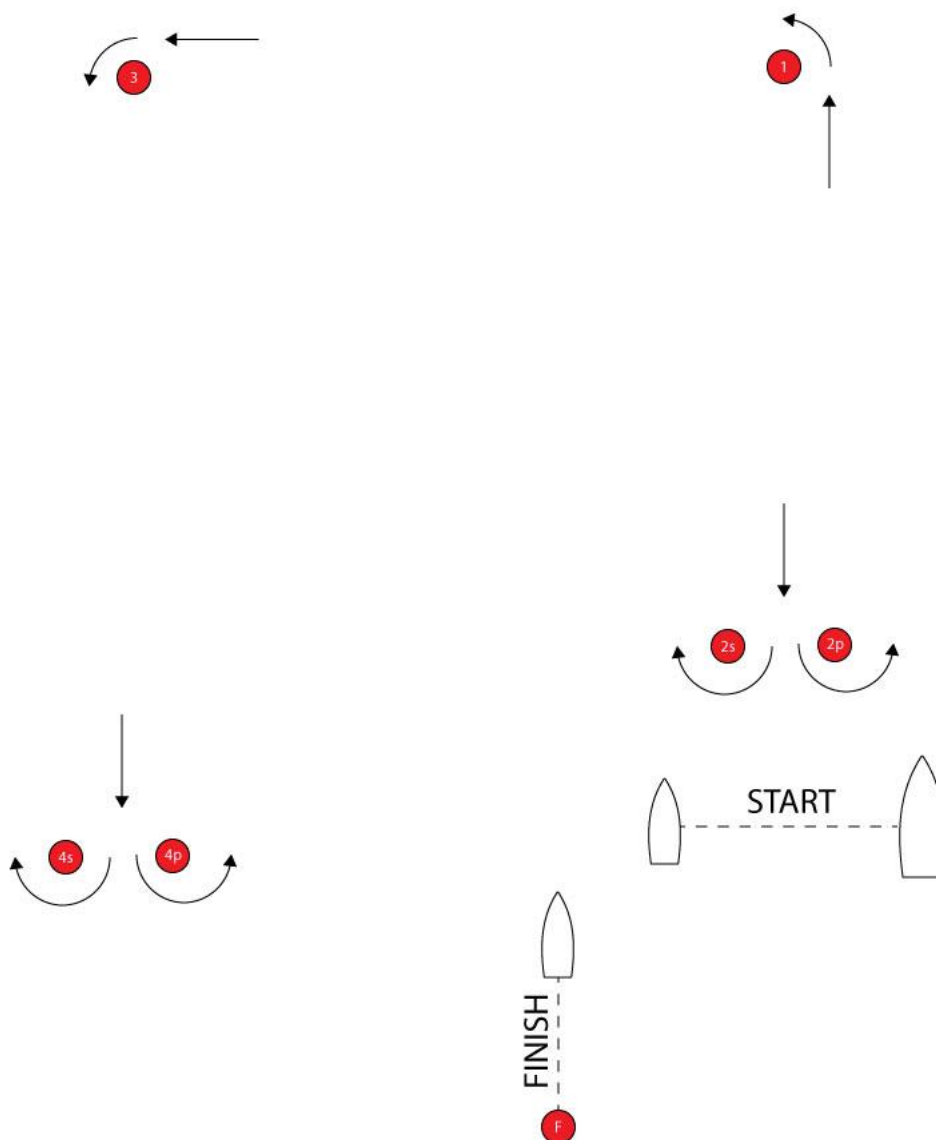
COURSE: WINDWARD / LEEWARD

SIGNAL	MARK ROUNDDING ORDER
L 2	START - 1 - 2S/2P - 1 - FINISH
L 3	START - 1 - 2S/2P - 1 - 2S/2P - 1 - FINISH



COURSE: OUTERLOOP / INNERLOOP

SIGNAL	MARK ROUNDING ORDER
O	START – 1 – 3 – 4S/4P – 3 – 4P/4S – FINISH
I	START – 1 – 2S/2P – 1 – 3 – 4P/4S – FINISH



ATTACHMENT B - COURSE LOCATIONS



ATTACHMENT C – RACING SCHEDULE & AREA ASSIGNMENT

OPENING SERIES – 16 to 19 February

Date	Area A	1 st Warning	Area B	1 st Warning
16 feb	49er FX	11:00 hrs Not before 13:00 hrs	ILCA7	11:00 hrs
17 feb	FX 49er	11:00 hrs Not before 13:00 hrs	ILCA7	11:00 hrs
18 feb	ILCA7	11:00 hrs	49er FX	11:00 hrs Not before 13:00 hrs
19 feb	ILCA7	11:00 hrs	FX 49er	11:00 hrs Not before 13:00 hrs

Area C will be kept as a Reserve Area, to be considered depending on wind conditions.

MEDAL RACES – 19 February

Medal Races schedule will be published as soon as possible after the last race of the Opening Series.

Racing Area will be MR Area, immediately south of the Marina Wall

Intended Starting order will be ILCA7, FX & 49er. This schedule is subject to changes.